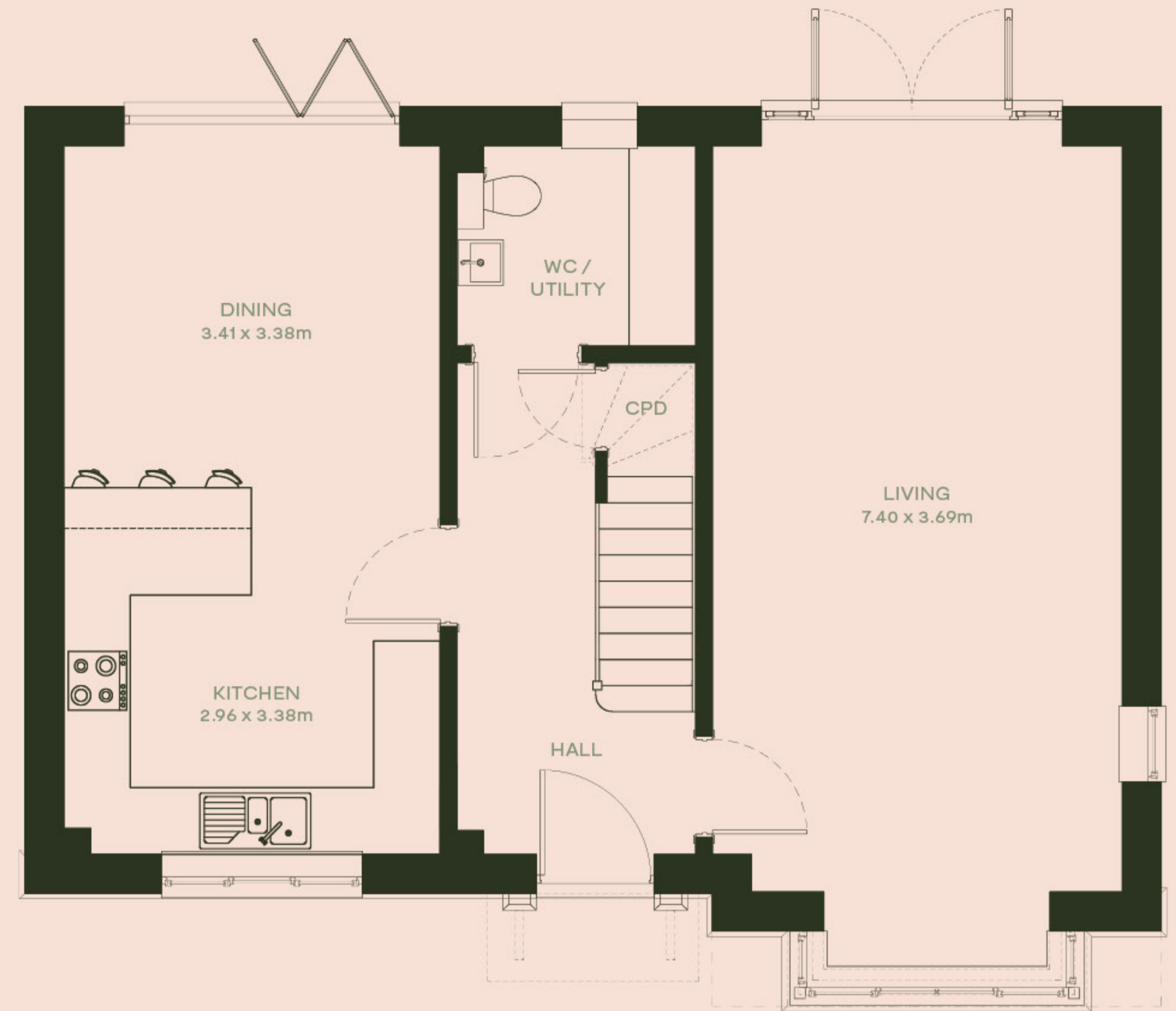


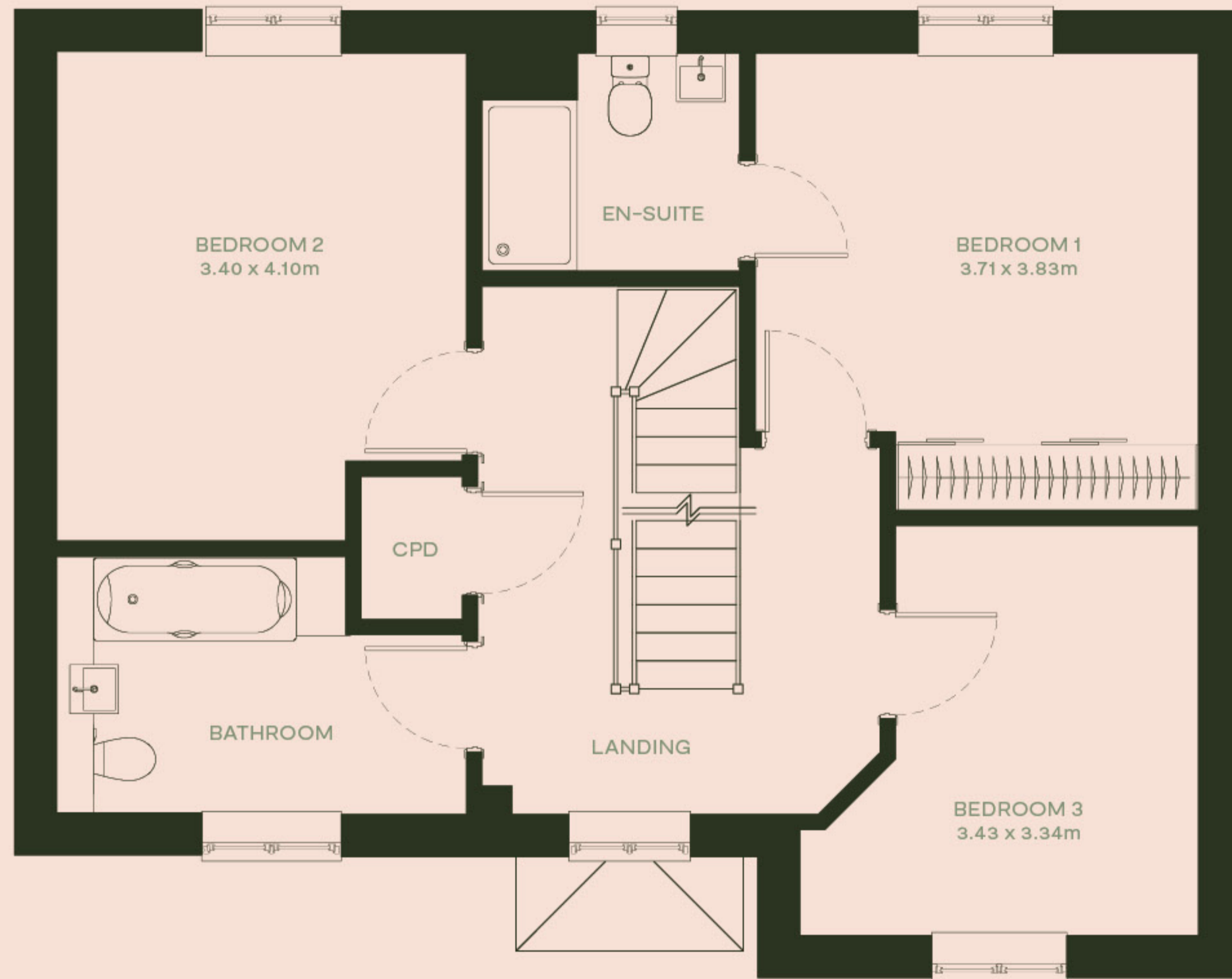
No 1

A STRIKING PROPERTY TO THE IMMEDIATE LEFT AS YOU ENTER GRAYLING PARK. DETACHED AND SPACIOUS, NUMBER 1 HAS A MORE PRIVATE DRIVEWAY AND ENTRANCE

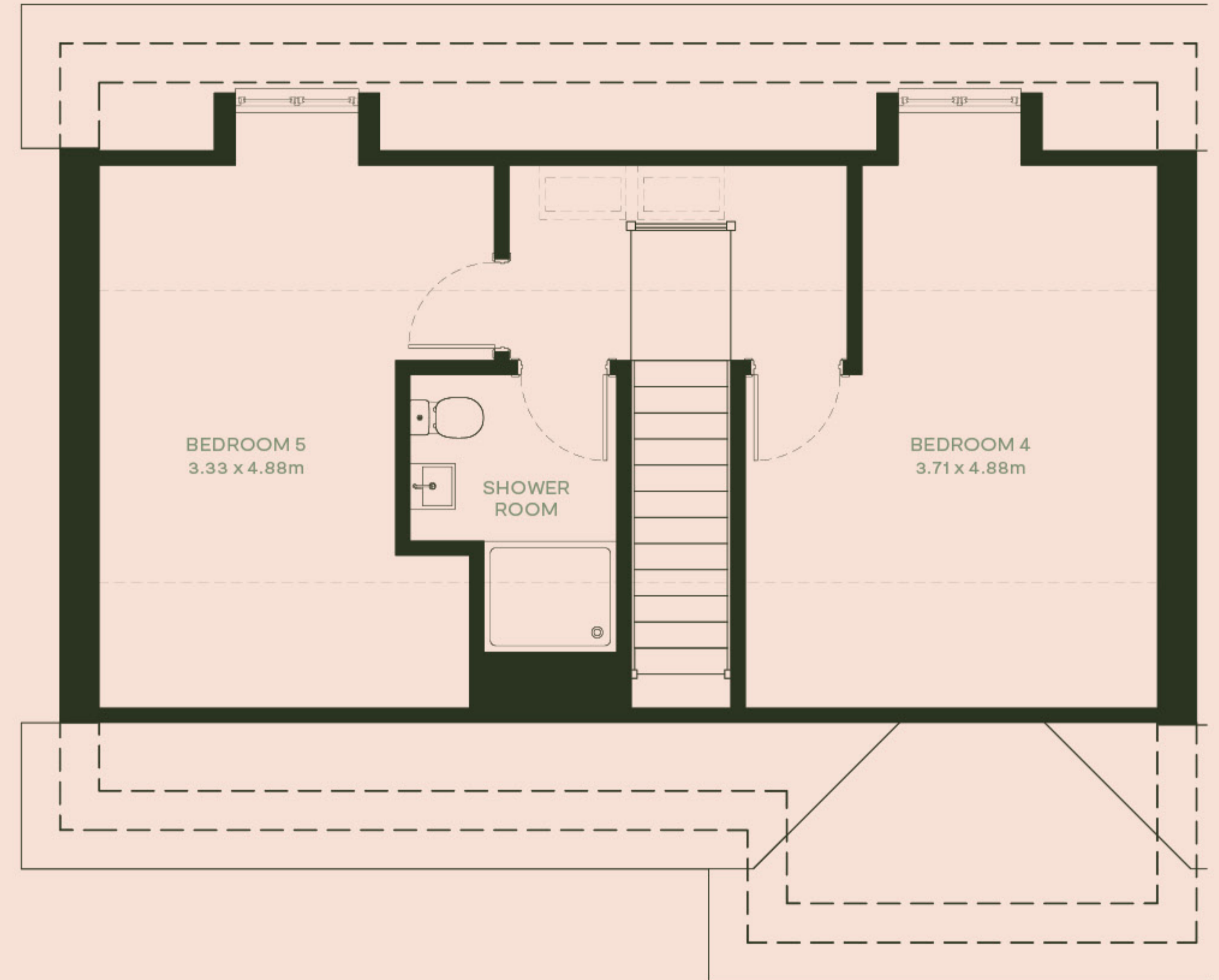
5 BEDROOMS — 3 BATHROOMS



Ground Floor



First Floor



Second Floor